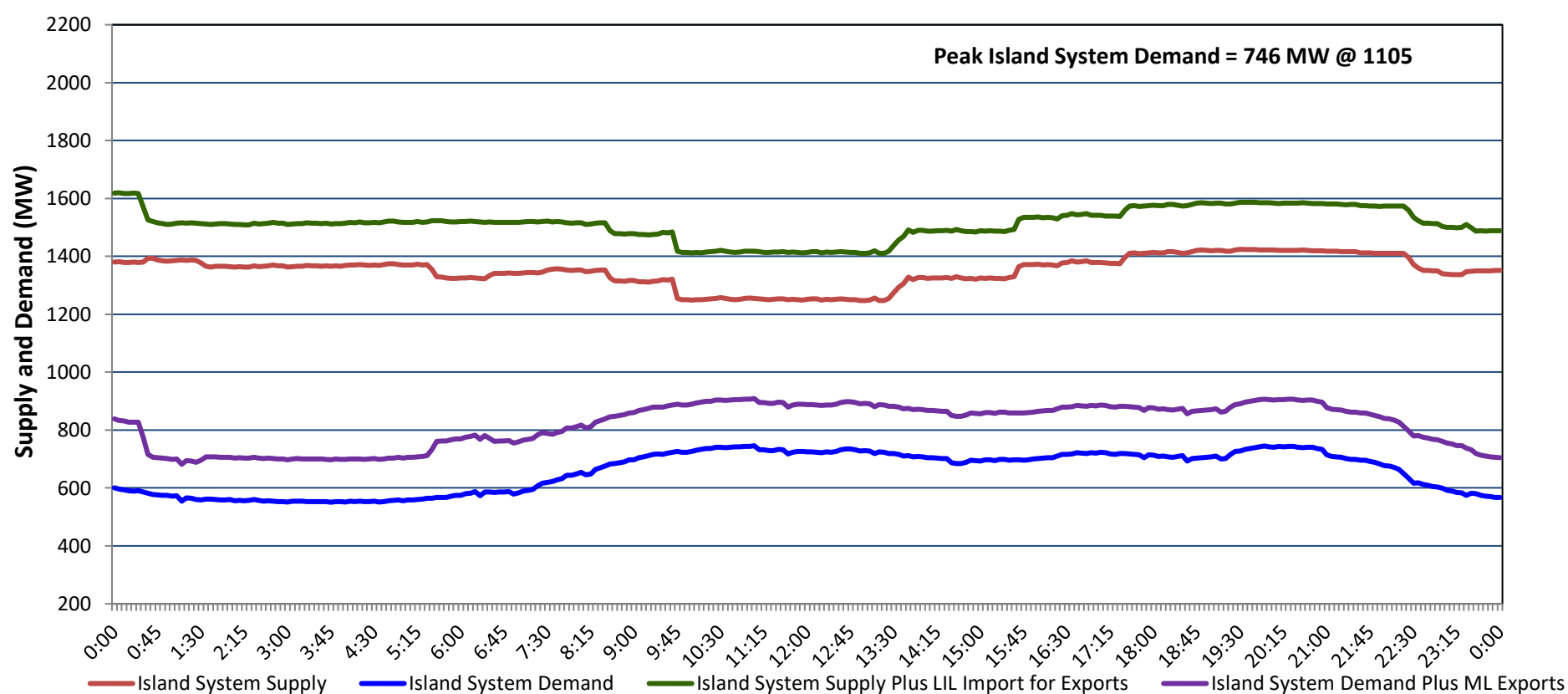


Newfoundland Labrador Hydro (NLH) Supply and Demand Status Report Filed Monday, September 16, 2024

Section 1 Island Interconnected System - Supply, Demand & Exports Actual 24 Hour System Performance For Sunday, September 15, 2024



Island Supply Notes For September 15, 2024 ¹

- A As of 2059 hours, July 13, 2023, Stephenville Gas Turbine unavailable due to forced outage (50 MW).
- B As of 1011 hours, April 12, 2024, Holyrood Unit 1 unavailable due to planned outage (170 MW).
- C As of 0700 hours, May 26, 2024, Holyrood Unit 3 unavailable due to planned outage (150 MW).
- D As of 0800 hours, August 04, 2024, Holyrood Unit 2 unavailable due to planned outage (170 MW).
- E As of 0800 hours, August 11, 2024, Bay d'Espoir Unit 4 unavailable due to planned outage (76.5 MW).
- F As of 1049 hours, August 25, 2024, Cat Arm Unit 1 unavailable due to planned outage (67 MW).
- G As of 1602 hours, September 14, 2024, Labrador Island Link available at 450 MW due to forced derating (700 MW) - Bipole.
- H **At 0941 hours, September 15, 2024, Cat Arm Unit 2 unavailable due to planned outage (67 MW).**

Section 2 Island Interconnected System - Supply, Demand & Outlook

Mon, Sep 16, 2024	Island System Outlook ²	Seven-Day Forecast	Island System Daily Peak Demand (MW)	
			Forecast ⁸	Adjusted ⁶
Island System Supply: ⁴	1,192 MW	Monday, September 16, 2024	790	752
NLH Island Generation: ^{3,7}	940 MW	Tuesday, September 17, 2024	735	697
NLH Island Power Purchases: ⁵	70 MW	Wednesday, September 18, 2024	745	707
NP and CBPP Owned Generation:	170 MW	Thursday, September 19, 2024	755	717
LIL Net Imports to Island: ⁹	12 MW	Friday, September 20, 2024	755	717
		Saturday, September 21, 2024	780	742
7-Day Island Peak Demand Forecast:	815 MW	Sunday, September 22, 2024	815	777

Island Supply Notes For September 16, 2024

- I **At 0539 hours, September 16, 2024, Labrador Island Link available at 450 MW due to planned derating (700 MW) - Monopole.**

- Notes:
1. Generation outages for running and corrective maintenance are included. These are not unusual for power system operations. They generally do not impact customer supply. Hydro schedules outages to system equipment whenever possible to coincide with periods when customer demands are low and sufficient supply reserves are available. However, from time to time equipment outages are necessary and reserves may be impacted.
 2. As of 0800 Hours.
 3. Gross continuous unit output.
 4. Gross output from all Island sources (including Note 4).
 5. NLH Island Power Purchases include: ML Imports, Exploits Generation, Rattle Brook, Star Lake, Wind Generation and capacity assistance (when applicable).
 6. Adjusted for interruptible load and the impact of voltage reduction when applicable.
 7. Due to limitations inherent in the design of combustion turbines, the output of combustion turbines may be reduced in the event that ambient temperatures exceed the threshold required for full rated output. This threshold is dependent on the design of each turbine.
 8. Does not include ML Exports.
 9. LIL Import sunk in the Island System. Actual LIL flows will be restricted by various system conditions including, but not limited to, Island Load, ML Exports and Avalon Unit status.

Section 3 Island Peak Demand and Exports Information Previous Day Actual Peak and Current Day Forecast Peak

Sun, Sep 15, 2024	Island Peak Demand ¹⁰	11:05	746 MW
	Exports at Peak		163 MW
	LIL Net Imports to Island		3,224 MWh
Mon, Sep 16, 2024	Forecast Island Peak Demand		790 MW

- Notes: 10. Island Demand is supplied by NLH generation and purchases, LIL Imports plus generation owned and operated by Newfoundland Power and Corner Brook Pulp & Paper (Deer Lake Power, DLP).